

MONTHLY MEMBERSHIP PROGRESS REPORT

LOCATION MICHIGAN

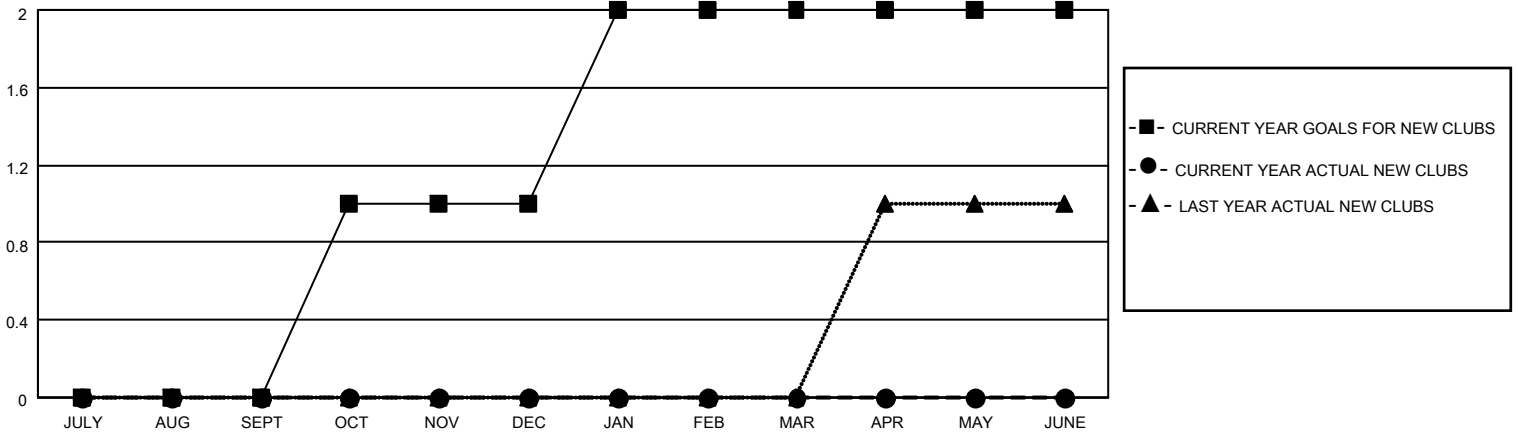
District 10

Results as of: 6/30/2021

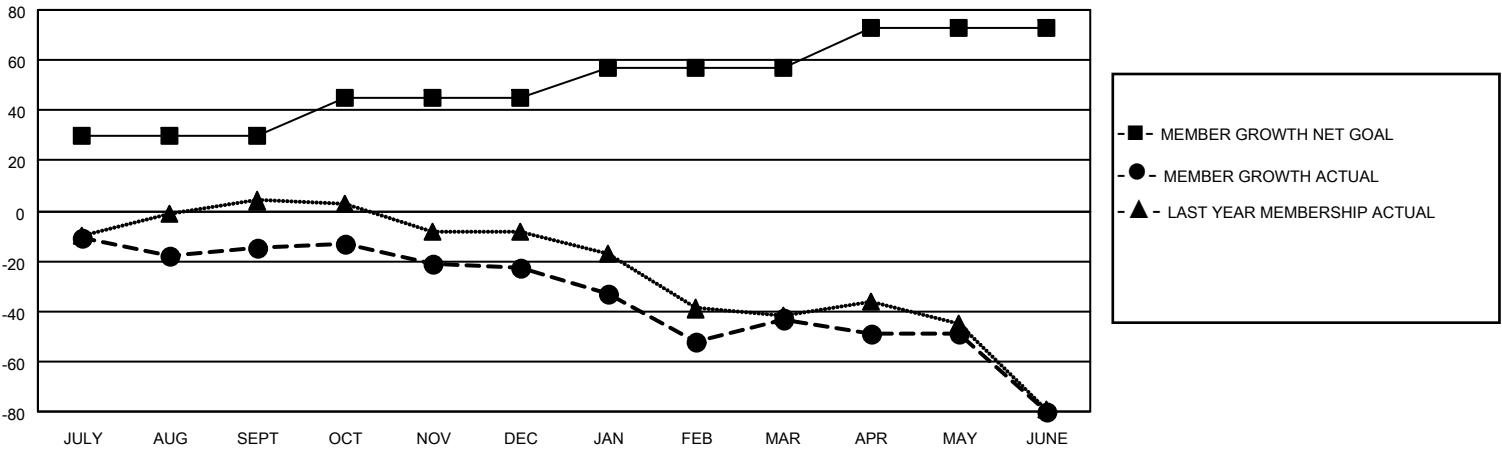
Clubs			
RESULTS FOR 2020-2021			
QUARTER	NEW CLUB GOAL	NEW CLUBS	DROPPED CLUBS
JULY/AUG/SEPT	0	0	2
OCT/NOV/DEC	1	0	0
JAN/FEB/MAR	1	0	0
APR/MAY/JUNE	0	0	1

Members			
RESULTS FOR 2020-2021			
QUARTER	MEMBER GROWTH NET GOAL	MEMBER GROWTH ACTUAL	DROPPED MEMBERS ACTUAL (including transfers)
JULY/AUG/SEPT	30	20	32
OCT/NOV/DEC	15	11	19
JAN/FEB/MAR	12	20	38
APR/MAY/JUNE	16	22	57

GOALS AND ACTUAL NEW CLUBS CUMULATIVE



GOALS AND ACTUAL MEMBERS CUMULATIVE



DROPPED CLUBS: 3	
DROPPED MEMBERS	
DECEASED	21
CLUB CANCELLED	17
OTHER	108
TOTAL	146

27 CLUBS OF 55 ADDED 1 OR MORE NEW MEMBERS

[CLICK HERE FOR CUMULATIVE MEMBERSHIP DATA](#)

<u>GENDER DISTRIBUTION</u>	
MALE	914 (70.52%)
FEMALE	382 (29.48%)

TOTAL FAMILY UNIT MEMBERS	228
FAMILY MEMBERS PAYING HALF DUES	115